

Pond Pure

The all-natural nutrient remover for ponds, and lakes - Algae control with commanding pace, without chemicals



MalaTECH
water

PRODUCT DESCRIPTION

Pond Pure is an all-natural digestive product derived from botanically enhanced formulations used mainly for the removal of algae in ponds and lakes. The mechanism of action is based on the digestion of Nitrogen and Phosphorous. Most algae pollution is produced from run-off of fertilizers used by farmers and homeowners. High levels of Nitrogen and Phosphorus are fuels for the accelerated growth of algae. Pond Pure is a non-toxic, non-hazardous system digesting Ammonium, other Nitrogen forms, and Phosphorous, thus clearing the pond of algae and scum accumulation, thereby bringing the pond back to its natural ecosystem.



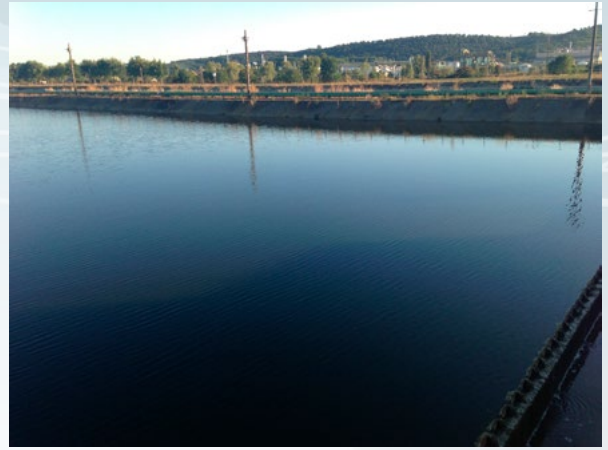
With Pond Pure, the Ammonium is converted to nitrogen gas and the phosphorus is absorbed into the cellular matrix of the bacteria to form the cell walls which aid in the energy system of the Mitochondria. The elimination of these nutrients is essential in our strategy of algae control. The Pond Pure system starves algae and also digests the toxins produced by Cyanobacteria (blue-green algae).

With Pond Pure, fecal matter and other organic materials are easily digested and turned into carbon dioxide and water. The enzymes in Pond Pure are efficiently successful at dissolving scum build-up.

Pond Pure is used for freshwater applications, as well as for wastewater applications in tertiary treatment / polishing / stabilization ponds for algae, and pH control. The biological system in Pond Pure works in both aerobic and anaerobic digestion processing environments. Pond Pure's digestive processes also help lower the TSS (Total Suspended Solids) in the decanted water for wastewater pond applications. Please check our other technologies used in tertiary wastewater treatment pond optimization along with Pond Pure: [SolarBee](#), [Vickzyme Powder](#), [BioGuarde I](#).

POND PURE - FIELDS OF APPLICATION

- Garden ponds
- Smaller freshwater lakes
- Tertiary treatment / polishing / stabilization ponds
- Effluent holding tanks, lagoons,



BENEFITS OF POND PURE

- pH control
- Provides quick, and visible algae, and aquatic weed control
- Reduces the concentration of Phosphorous, Nitrogen compounds, sludge and TSS
- Digests fecal matter and removes odors
- Microbial, biological and natural process
- Safe for the environment and wildlife
- Non-toxic and non-hazardous

APPLICATION OF POND PURE – DOSING, TECHNICAL INFORMATION

IMPORTANT INFORMATION

Recommended daily dosages are given in ppm based on:

Freshwater applications: m^3 volume of water in the pond or lake

Wastewater applications: m^3/d average hydraulic raw wastewater load!



For determining exact dosages for your WWTP or freshwater pond/lake, please provide us information by sending us our questionnaire filled with information as much as possible: [Click here for questionnaires!](#)

Dosage of Pond Pure for wastewater applications is preferably continuous by mixing the product with pure water, and pour the content into our Malatech-C Dosing Unit. Our dosing units are easy to install, and use, consume low amount of space, isolated, and have a heating function for outdoor operations at winter. [Click here](#) for more information on the Malatech-C Dosing Unit!

Whenever you have any questions, do not hesitate to [contact us!](#)

DOSAGE INFORMATION

Freshwater applications in garden ponds, smaller lakes:

For prevention of algae blooms: 1-3 ppm once a month in season

For algae count reduction at moderate blooming: 4-6 ppm once a week until water clarity improves. Right after that, maintenance dosage shown above (1-3 ppm once a month) is recommended.

For stopping heavy algal blooms: 10 ppm once a week until water clarity improves. Right after that, maintenance dosage shown above (1-3 ppm once a month) is recommended.

Dosing method: Into the recirculation water stream, or dilute Pond Pure with the pond's water, and spray the solution evenly covering the surface.

Wastewater applications at tertiary treatment / polishing / stabilization ponds:

Week 1: 4-12 ppm depending on influent nutrient concentrations, and HRT of water in the system.

Onwards: 0.5-8 ppm depending on influent nutrient concentrations, and HRT of water in the system.

Dosing location: influent stream.

PACKAGING INFORMATION

The product is available in 19 litre safety pails which is the lowest unit for ordering.

STORAGE INFORMATION

Keep the product in a cool and dry place below 28 Celsius. Avoid exposure to direct sunlight.

